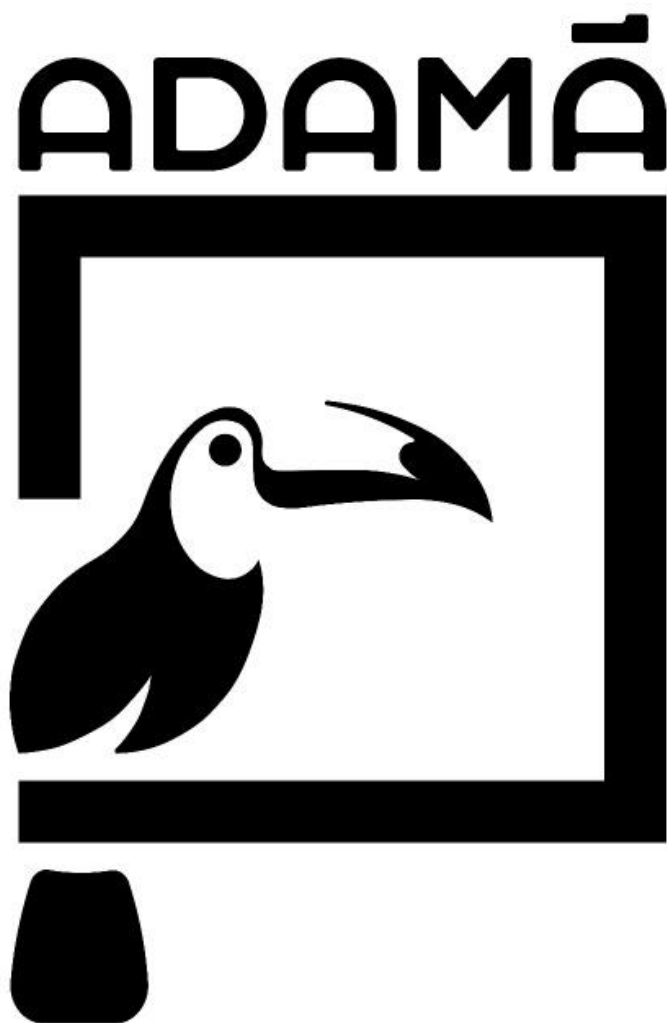


**Encaustic Cement Tile Installation Guide using
Polyurethane Adhesive (PU)**



Index

02	Preparation
02	Required Materials and Tools
03	Previous Observations
04	Execution
05	Dry Joints
05	Grouting
06	Cleaning and Sealing
07	Precautions

Well done! The acquisition of this product indicates your great sensitivity and good taste about environments decoration, without leaving quality and durability of the product behind. For everything gets concluded as planned, our instructions are as follows, to guarantee the pieces integrity until the sealing time. This form of installation is recommended for indoor and free of actions of the weather walls only.

Preparation

- Plaster fine or subfloor
 - Must be free from signs of infiltration, efflorescence and any type of dirt or oiliness
 - Ensure about the leveling and remove any impregnated material that may cause bulk and ripples.
 - Use a soft bristle broom or smooth brush to remove all residues of plaster and lose dust
 - All surface must be sealed with a minimum of 21 days curing
- Smooth Finishing (plaster, painting or spackling)
 - Ensure for signs of humidity (bubbles, peeling). If there are, the surface must be shaved, sanded and a sealer applied (follow the manufacturer's instructions for complete drying)
 - Make roughness correction using fine sand paper for spackling (number 180, 200, etc.) and clean the residues with soft brush

Required Materials and Tools



PU Tube Applicator



Polyurethane Adhesive Tubes (PU)



Soft Brush



Measuring Tape



Wide Crepe Tape



Spacers (2 – 5mm)



Plasterer Straight Edge



Spirit Level



Squeeze Bottle



Silicone Spatula



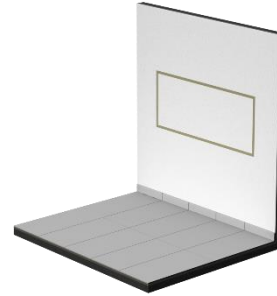
Acrylic Grout

Previous Observations

- Check the surface leveling. Any ripple will compromise the final quality
- Demarcate the panel to be installed (width and high) using crepe tape for easy removal after conclusion. At this moment the leveling is defined using the spirit level

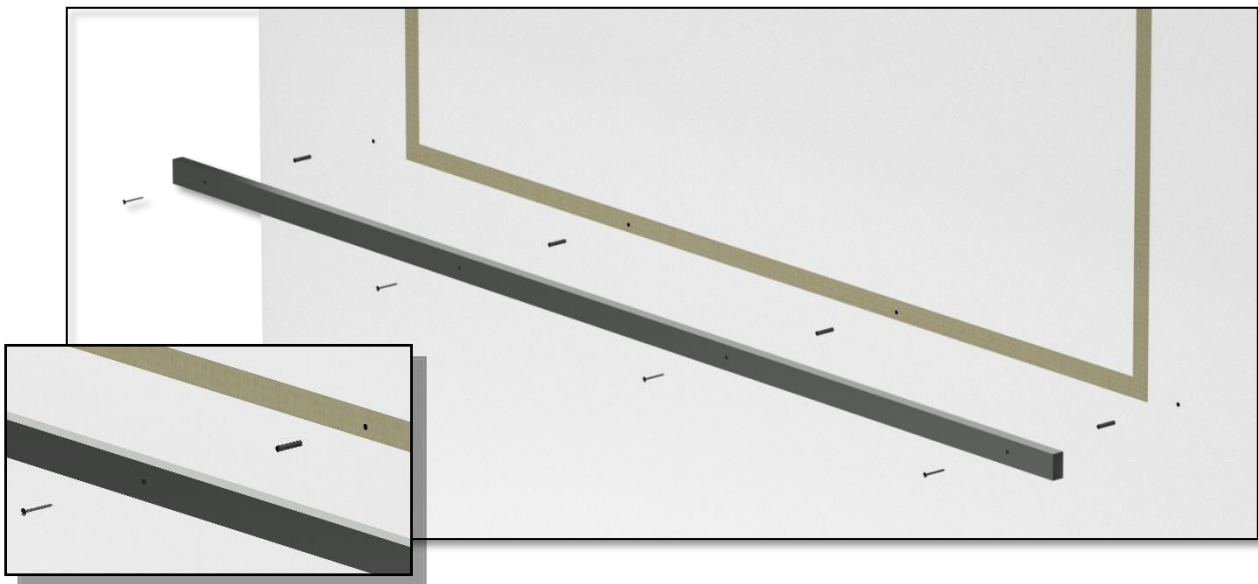


Demarcated area
(from the base)



Demarcated area
(suspended)

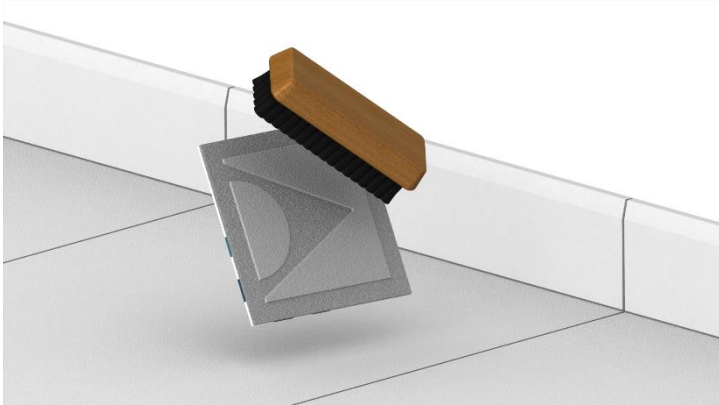
- Have the panel pagination handy (layout draw), that will determine the appropriate positions of each piece
- Ensure about absolute absence of humidity on the pieces.
- If the area on the wall is suspended and with no support, a temporary use of a plasterer straight edge is necessary, fixed with screw and bush. Its removal must only be made after total conclusion of the installation and curing of grout (according to the manufacturer).



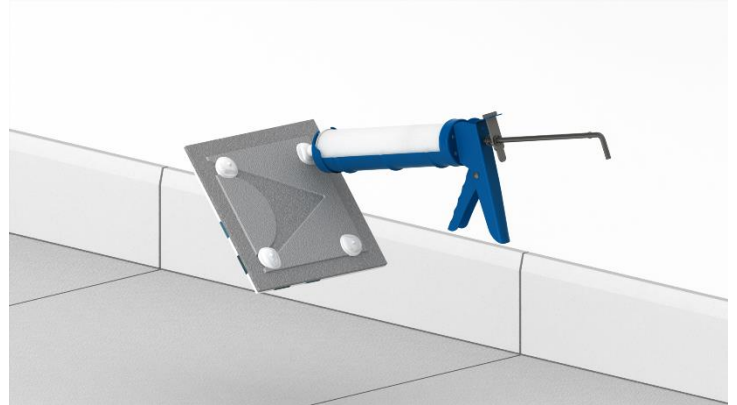
- Assemble the pieces of the first row to be install on the floor, to define their positions (consider the spacers) and confirm the complete measurings of the panel.
- Cut the tube nozzle on its half for better material flow.

Execution

The following steps must be followed during the entire installation:



1st. Clean the back of the piece with a soft brush to remove residues.



2nd. Apply circular portions of 3cm diameter by 1cm high at the indicated areas.



3rd. Adjust its position by pressing it against the base and dragging it slightly toward the installed pieces. Insert the spacers so that they are not pinched.



4th. Check the alignment and leveling with the spirit level. Hold the piece on the position for 10 seconds.

Wait at least 30 minutes before settling one piece over another.

Dry joints

Encaustic Cement Tiles are traditionally installed with dry joints, in other words, with greater proximity in between pieces without filling with grout. There is a wrong concept of joining the sides between the pieces in order of unkeeping any spaces between them. This type of installation causes further displacement or crack of the pieces, due to natural dilation every coating has. Therefore, the correct dry joint has 2mm distance between the pieces.

Grouting

Grouting may be done only after total polyurethane adhesive curing (according to the manufacturer's instructions) and joints with a minimum of 3mm distance. For this type of installation, choose preferably an acrylic type of flexible grout for that dispenses the use of water. After finishing the panel rejoining, wait for the drying time for sealing recommended by the manufacturer.

Prepare a crepe tape protection on frontal faces that must be removed right after conclusion.

Use a Squeeze Bottle with fine beak for applying the material.

Because it is a wall, the correct is to complete all horizontal and vertical grouting in sequence.

Follow the next steps:



1st. Remove the spacers. Apply crepe tape to the two horizontal edges of all pieces joints. The closer to the limit the better, however do not enter inside spaces. If that occurs, it will displace the installed grout when tape is removed.

2nd. Apply the grout evenly in spans. It is not necessary fulfilling the entire depth of joints. The function is only to seal the spans between the surfaces.





3rd. Level them with a silicone spatula. Be careful not exceeding the tape limits. Right after fulfilling all lines on the first way, remove all tapes and repeat the procedure on the opposite way. Pay attention not pressing the new tapes on applied grout, keeping it straightened only.

Cleaning and Sealing

After finishing the curing time of rejoining, the cleaning and sealing must be done immediately. For cleaning, it must be used:

- **Neutral detergent:** used in cases of light dirt, not coming from chemical products or highly impregnating as red soil. Also used for continuous maintenance without damaging the sealing.
- **Alkaline detergent:** used in cases of heavy dirt that cause deep stains, as oils, paints and greases. It may be used afterwards, however it removes any sealing protection product.

With the panel completely clean and dry, the sealing must be done according to the environment, and type of finishing and protection desired:

- **Oleophobics:** basic and obligatory product for any environment. Its function is to block any deep penetration of oil or water, making any further cleaning easier and preventing from stains and mould.
- **Acrylic Sealer (water based):** by offering protection against stains higher than oilphobics, it is recommended for greater traffic areas. As its individual usage is for indoors, it is used outdoors as a base of application of acrylic resin
- **Matt acrylic resin:** provides high power of protection against severe stains due to landscaping, machine' oils and others. By making a pellicle on the floor, it also increases the resistance to abrasion, however it causes a slight alteration on tonality. Highly recommended for swimming pool areas with landscaping.
- **Glossy acrylic resin:** has the same characteristics of the matt acrylic resin however with a glossy finishing. Not recommended for outdoor areas.

Precautions:

- Do not let the polyurethane adhesive make contact with front and side faces of the piece. That also applies to hand that may transfer the polyurethane adhesive time to the pieces. If that occurs, it may be removed with a dry cloth, however it may cause stains.
- Install all first row pieces in one day. The remaining pieces from the day after on, always in complete rows. That will guarantee the correct positioning and fixing of the upper rows.
- Check the leveling of the faces, piece by piece, with the spirit level. The curing start time of the polyurethane adhesive will allow the repositioning for about 30 seconds.
- Apply the tape on the piece at the application time only. A pellicle will form in minutes when exposed to the air and that will cause a bulk that will hinder the correct leveling of the pieces.
- Be careful when leaning the pieces with the faces down during the process. Besides the resistance of a cement based product, it must be sealed subsequently for protection from dust and chemical products.

For more details we will always be at your disposal through the following contacts:

contato@adamadesign.com.br

55 - 15 – 3202.8170